



MODERN TOUCH FOR 創意風格 | 將概念實體化 | VINTAGE DESIGNS

Furniture company blends Portuguese intricacy and Oriental subtlety
榮興傢俬揉合葡國的繽紛細緻及東方的簡樸平實

The vibrant intricacy of Portuguese style sits alongside Oriental simplicity and subtlety in Macao's architectural and interior design. W.H. Furniture, which has been in business for more than two decades, rose to prominence by offering vintage furniture. With Kelly Sou, a second generation family member at the helm, the company strives to promote the concept of "Living with Creativity". In addition to introducing Southeast Asian style furniture and decorations, the company offers bespoke design and furniture production for individuals and corporate customers.

Displaying owner's passion

W.H. Furniture operates the Hea Deco concept store at Rua Dos Negociantes in Vila Da Taipa, Ilhas. The store displays the owner's passion for interior and furniture design. "Our two lines of business are bespoke furniture and off-the-shelf

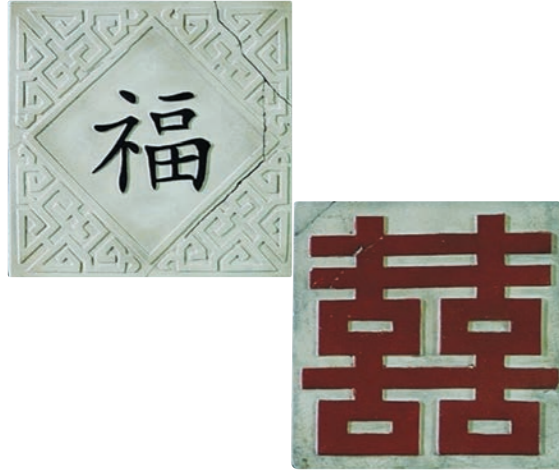
遊 走於華洋共處的澳門，很容易發現建築物與室內的設計均流露着兩種截然不同的風格：葡萄牙式的繽紛細緻以及傳統華人社會的簡樸平實。這兩種風格成為了澳門的主流色調，多年如是。榮興傢俬有限公司在澳門植根20多年，以經營仿古家具起家，第二代經營者蘇嘉欣繼承業務後，決意把「活出創意」的概念帶到澳門。除引入具有東南亞各國特色的傢俱及裝飾品外，亦包辦了設計及製作傢俬的環節，為每個家庭及商務客戶打造出不一樣的形象。

不同形態 創造自我生活文化

榮興傢俬於氹仔客商街開設了概念店「敘 Hea Deco」，甫踏進店內，已能感受到店主極其鍾愛室內及傢俬設計。「現時，我們的業務主要分為傢俬訂造以及零售現成傢俬及裝飾產品兩方面。在傢俬訂造範疇，我們的设计師會根據客人的家居佈局、需要及預算，設計出理想而富有創意特色的產品。」蘇嘉欣認為，榮興傢俬在设计風格上總能糅合時尚與古典，在拿捏家具的配襯及製作上更是得心應手。

Opposite: Furniture made of different materials can create something special when put together.

對頁: 以不同材質、物料製成各式傢俱，體現出獨特的品味。



“The concept of upcycling at the core of its design lexicon breathes life into traditional offerings.

榮興傢俬喜愛將現代元素加入至古典家具中，或運用二次創作的理念，令整個設計新穎起來。”

furniture and fixture retailing,” Sou says. “On the front of bespoke furniture, our designers propose creative ideas according to the space layout, needs and budget of individual customers.” She says the style reveals a balance between modern and vintage styles, and is aided by sound knowledge on mixing and matching and production.

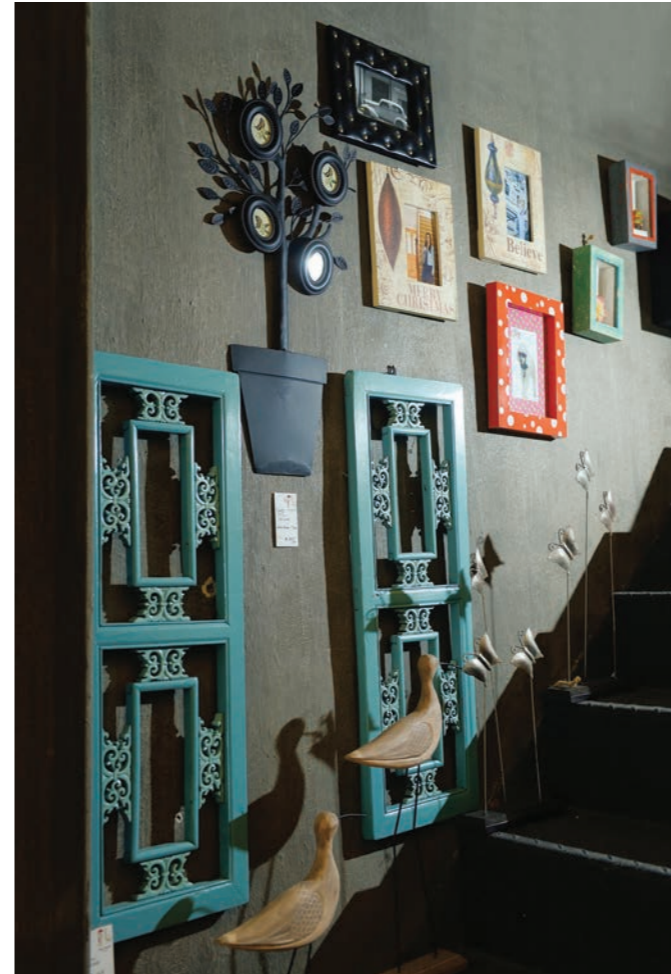
W.H. Furniture takes pride in renewing vintage designs with modern elements. The concept of upcycling at the core of its design lexicon breathes life into traditional offerings. Among the many impressive examples is the traditional Chinese screen reworked with matt black and gold lacquer and spin wheels on the four corners, which turns it into a mobile door as partition. In this way, an old-fashioned object can be turned into a functional design. Also on offer are lovely vintage European decorations collected by the owner, as W.H. Furniture is a treasure trove waiting to be explored.

Outstanding design concepts and premium quality make W.H. Furniture sought-after among the discerning few. Sou says the company’s customers encompass renowned hotel groups, restaurants and other institutions. “After customers tell us



榮興傢俬喜愛將現代元素加入至古典家具中，或運用二次創作的理念，令整個設計新穎起來。例如以往就曾把中式傳統屏風翻新，再掃上時代感十足的啞黑及金色漆油，並於屏風頂端及底部安裝滾輪，讓其變成用作分隔空間的活動門，令古老傳統的舊式設計，演化成具有實際用途、獨特精緻的家具。此外，店內亦有不少由店主特意搜羅的歐式古董裝飾，所以榮興傢俬亦是不少人的尋寶天地。

出色的設計理念，配以優秀的傢俬品質，讓榮興傢俬成功匯集了一批擁戴者。公司過往亦曾替不少大型酒店、餐飲及其他各類機構進行各式各樣的裝潢工



about their initial ideas, we will study whether they are feasible and give our professional advice to formulate a design project with personality,” she says. It generally takes about 30 days to deliver a furniture production order. “We usually use beech, birch and maple as raw materials during production. We visit Thailand regularly to select wood for our projects, so quality is assured.”

Personalised products

W.H. Furniture’s style has proved irresistible to loyal supporters look for personalised products. Each design of W.H. Furniture is special as none undergo mass production. The company also believes in mixing furniture made from different materials to create a lifestyle with substance. It is striving to consolidate its presence in the local market, and explore more room for creative design in the community. **M**

程。蘇嘉欣說：「我們主要是以迎合客戶需求為先，根據顧客初步的概念，再去衡量各方面的可能性，然後再提出我們的專業意見，讓整項設計帶出個人風格。」她表示，由確定設計開始，約30天便能完成傢俬的製作。「在製作方面，我們大多會使用木、樺木及楓木作為原料，又會經常到泰國選購木材，以確保質料符合客戶的要求。」

確立生活文化態度 吸納中產客戶

由於風格與一般家具店截然不同，榮興傢俬成功吸引到一批追求個性化的中產客戶。榮興傢俬不會就某個設計項目進行大量生產，因而讓產品保持獨特性，又相信只要透過不同質料的傢俬，便能體現出細膩的生活文化。展望將來，公司希望爭取更多本土人士對榮興傢俬的認同，為澳門開拓更廣的設計空間。 **M**



Clockwise from above left: The Chinese lattice window has been upcycled into a wall-mounted decoration; an Oriental-style design; Kelly Sou is in charge at W.H. Furniture

由左上起：翻新中式窗框後再進行二次創作，成為掛牆裝飾，別有一番風味；充滿東方風情的設計；榮興傢俬有限公司負責人蘇嘉欣



Above: Decorations available with W.H. Furniture come in a style that reveals a balance between modern and vintage styles.

上：榮興傢俬出售的裝飾品，設計糅合時尚與古典。

169 W.H. FURNITURE COMPANY LIMITED
榮興傢俬有限公司
Tel: (853) 2825 7699

